



Hartford Union High School District

# Alt Graduation Options & Career Pathways

Scott Carr

Hartford Union High School District



Hartford Union High School District

# Do it Differently!

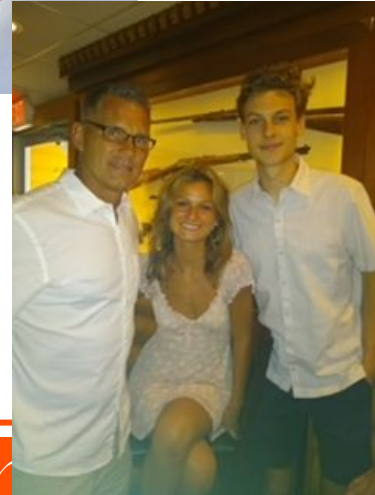
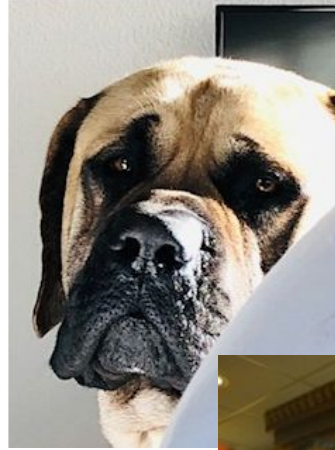
- Get us thinking differently regarding our educational process
- Look at innovative ideas relating to:
  - Graduation, Career, Continuing Ed, Community - pathways
  - Early Identification System - let's be proactive
  - ACP on steroids - maybe
- Support you once you walk out

[scott.carr@huhs.org](mailto:scott.carr@huhs.org)

# Scott Carr - [scott.carr@huhs.org](mailto:scott.carr@huhs.org) 262-993-6343

- Residential
- Intensive Day Treatment Program
- Pub School - Alt Ed, Self-contain
- Off-site Alternative Options
- GEDO2
- Work-based Transition Programming
- Apprenticeship - Co-op
- ACP Focused Alt Ed Program
- ACP, CCR, EE, Leadership
- Alternative Grad Pathways
- Partnering w Community - Pathways
- Include Continuing Education
- Persistence / Reflectiveness

Graduate / Career & Community Life Ready



*Engage*

*Support*

*Discover*

*Achieve*

*Contribute*



Hartford Union High School District

# Our Purpose

Every Student a  
High School Graduate

Every Student Career &  
Community Ready



**Opportunity**  
through  
**Options**

**Jump**start *to* **S U C C E S S**

scott.carr@huhs.org



# Setting Higher Expectations



## CAREER COLLEGE CITIZENSHIP READINESS - Grad Requirements

### Jumpstart to SUCCESS

Preparing our students for post-secondary education along with preparation for the workplace, is a high priority for HUHS. Through our Jumpstart to Success (CCCR) experiential opportunities, students gain the skill along with meeting our CCCR graduation requirements. Included below are the graduation requirements for CCCR.

**1 plus 4** - Every student must choose 1 experience from both **CAREER & COLLEGE**, and 4 additional experiences from either or a combination of the two areas.

#### CAREER LIFE READY

- Youth Apprenticeships**  
YA is a school-to-work occupational hands-on program.
- Business & Industry Certs**  
B&I are certifications based on career-readiness skills.
- Entrepreneurship**  
Intentional business skill building within a program structure.
- CO-OP Experience**  
Work based learning paired with businesses.
- Internship**  
Specific career path with job placement for workforce experience.
- Career Tours**  
Workplace tour of a company or business.
- Job Shadow**  
Specific career path job observation over time.
- Post Secondary Program Tour**  
Higher Ed tour in a specific career path area.

#### COLLEGE LIFE READY

- Dual Credit**  
Enrolled in high school and college to earn credits at both - 4 or 2 yr college.
  - Start College Now Program
  - Transcribed Credits
  - CAPP
  - MPTC
- PLTW**  
Biomedical Science program offering hands-on and career readiness experiences.
- AP**  
Introduction to college level courses within the HS schedule along with the opportunity to gain college credit.
- CLEP**  
Gaining college level credit through independent study on a college campus.
- Post Secondary Program Tour with FAFSA Application**  
Higher Ed tour in a specific career path area along with completing the FAFSA.

**All** - Every student must complete all experiences in the **CITIZENSHIP** area.

#### CITIZENSHIP LIFE READY

- Complete LIFE READY Plan**  
Initiate plan freshman year and follow through to completion throughout high school career.
- Complete LIFE READY Portfolio**  
Complete and present LIFE READY Portfolio to Oricle Time Coach/Mentor at the end of senior year.
- 30 Hours of Community Service**  
Complete 30 hours or more of community service during 4 years of high school.
- WI Info & Digital Lit Standards**  
Participate in and complete WI Information and Digital Literacy Standards.
- Financial Literacy**  
Successfully complete Financial Literacy proficiency.
- Civics Exam**  
Successfully complete Civics Exam.



**Graduation**  
**Life ready**



**Graduation**  
**Career**  
**Community**  
**Continuing Ed**

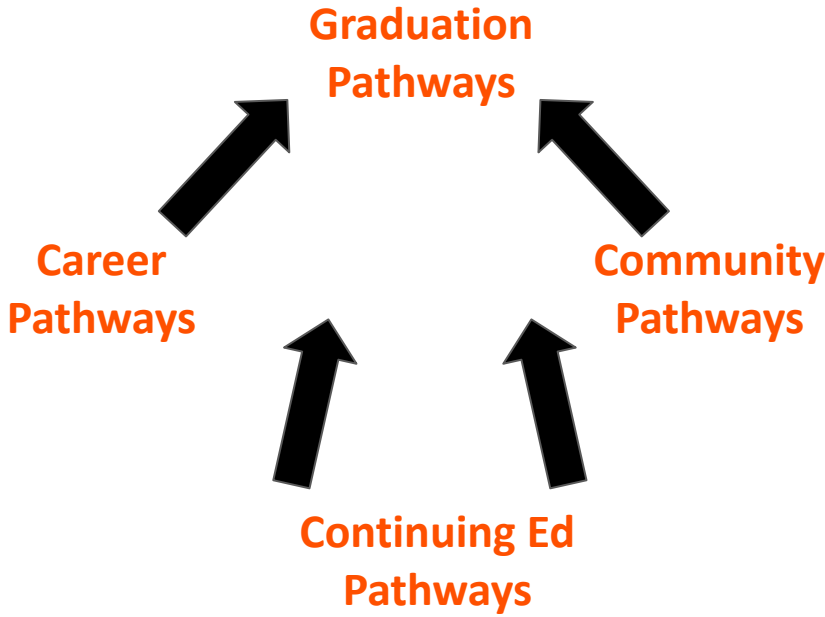
**Pathways**

[scott.carr@huhs.org](mailto:scott.carr@huhs.org)



Hartford Union High School District

# Graduation Career & Community Life ready



scott.carr@huhs.org

**Hartford Union High School**  
**Graduate Profile**  
**Jumpstart to SUCCESS**

**We Are Lifelong Learners**  
We are lifelong learners who have a continual quest for knowledge.  
We have a willingness to try new things and the desire to improve.

**We Are Engaged Citizens**  
We are community proud and community strong.  
We volunteer our time and talents to enhance the area in which we live.

**We Are Globally Responsible**  
We understand the importance of...  
We are connected to...

**Curious • Critical Thinkers • Imaginative • Problem Solvers • Coachable**  
**Collaborative • Informed • Aware • Invested • Involved**

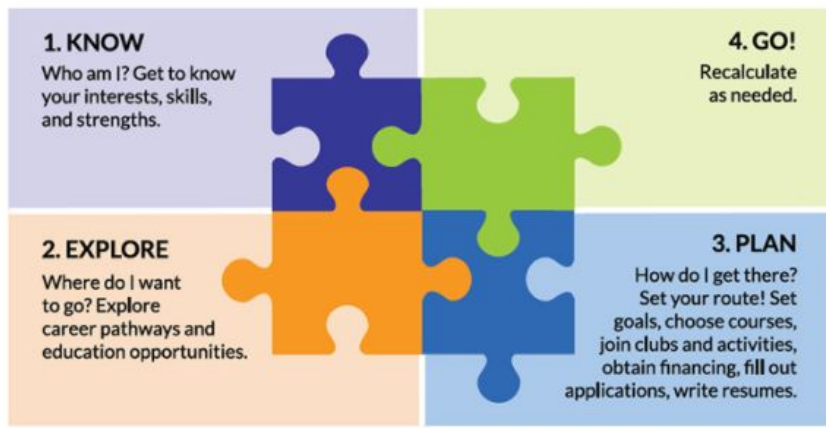
# Approach

## Career Community Ready

Identified and Specific

*Life Ready Plan - Gen Ed*

*PNIP - Alt Ed*



**Hartford Union High School District**  
**HUHS Student Life Ready Plan**  
**Academic Career Citizenship Planning (ACCP)**

ACCP is intended to equip you with the tools necessary to make more informed choices about careers for life after high school, training, and postsecondary education. It is our overall vision at HUHS that you graduate high school academic, career, and community ready.

The intent and purpose of the HUHS Life Ready Plan is to assist you in understanding what planning. This document should help guide your steps through this process and include these areas:

- Self Awareness** - Creating opportunities through ACCP activities to assist you in understanding what your skills and interests are, what you enjoy doing, and how you learn best. This will help guide you towards a career identity.
- Career Exploration** - Participating in work-based learning activities and experience to help you understand career opportunities that match your career identity.
- Career Planning** - Developing and implementing a plan that fits your interests and skill set and career process leading you to a post-secondary opportunity that will support your career path.
- Skills Based Academic and Career Planning** - Following through with academic, career, and citizenship skill building opportunities that will support your career path.

**How to use this recording document to help guide you through your high school career:**

- Follow the steps and complete all sections in each area of the ACCP.
- Work with your Oriole Time Mentor Coach to plan, follow through with action steps, and reflect on progress as you move through your high school journey.
- Use this document to reflect on and make adjustments as needed throughout your ACCP.

Use this document to plan out and keep record of all information relating to your ACCP. Live, enjoy your journey, and take advantage of the process - it is your future!

Phone \_\_\_\_\_ Email \_\_\_\_\_

**HUHS - ACCP**  
**Student General Information**

Fill in Colored Boxes

Last Name	First Name	Graduation Year
Counselor	OTMC	Student Cell #
Personal email (if have one)	Middle School	
	Middle School Counselor	

Personal email and cell will be used to reach out to student after graduation for data/post secondary reasons

----- Academic / Career / Citizenship Planning Sections -----

**HUHS - ACCP**  
**Academic & Career Information**

Fill in Colored Boxes

Personal Interests and Likes

List the top \_\_\_\_\_

**Student Options**  
**PERSONAL NEEDS INTEREST PROFILE**

Student Name: \_\_\_\_\_ Year in school/School District: \_\_\_\_\_ Grad Yr: \_\_\_\_\_

District Contact: \_\_\_\_\_ Position in district: \_\_\_\_\_

First Date of Enrollment: \_\_\_\_\_ Today's Date: \_\_\_\_\_ Updates Dates of PNP: \_\_\_\_\_

**PNIP**  
**Academic Supports Needs**

**General & SPED Info**

Present Grade: \_\_\_\_\_ Grad Year: \_\_\_\_\_

SPED/504: \_\_\_\_\_ Area of Disability/Need: \_\_\_\_\_

SPED/504 Contact: \_\_\_\_\_

Special Education Services Related to Alt Ed planning: \_\_\_\_\_

SPED Modifications: \_\_\_\_\_

[scott.carr@huhs.org](mailto:scott.carr@huhs.org)

Enga

istrict





The Story of Nate [click here](#)

DPI Regional Career Pathway Website [click here](#)

## Regional Career Pathways

Educator Resources

Industry Sectors ^

Business Administration

Construction

Digital Technology

Healthcare

Manufacturing

STEM - Energy



Share out... who has a structure that support students and pathways?

Wisconsin Pathways; Where Talent Starts [click here](#)

scott.carr@huhs.org

# Pathway Wisconsin Resources



Hartford Union High School District

Advanced Manufacturing Career Pathway			
to find the job titles that seem most interesting to you to learn more! Save any jobs you are interested in from this career pathway in your XELLO site an Academic and Career Plan (ACP) later on.			
Production	Engineering and Design	Industry 4.0	Electro-Mechanical
Engine/Machine Assembler O	Data Entry Clerk O	General Laborer	Shipping & Receiving Clerk O
Paint Technician * Food Processing Operator Welder * Sheet Metal Worker O Production Technician * Range \$100,000-\$200,000	CAD Drafter Quality Assurance Technician * Range \$100,000-\$200,000	Robotic Welder * Quality Controller O Robotics Technician * Range \$100,000-\$200,000	Electrical Engineering Tech O * Industrial Engineering Tech O * Industrial Maintenance Mechanic O Range \$100,000-\$200,000
Industrial Pipefitter Tool and Die Maker Pattern Maker Machinist O Mold Maker Range \$100,000-\$200,000	Electrical Discharge Machining Technician Range \$100,000-\$200,000	Millwright O * CNC Technician * Industrial Electrician * Industrial Machinery Technician O Maintenance Mechanic O * Mechanics Technician * Range \$100,000-\$200,000	Robotics and Material Handler Technician Inventory Control * Range \$100,000-\$200,000
Manufacturing Machine Operator O * Range \$100,000-\$200,000	Drafter O * Range \$100,000-\$200,000	Mechanical Engineering Technician Electrical Engineer Technician Electro-mechanical Range \$100,000-\$200,000	Buyer Production Planner Logistics Analyst
Manufacturing Manager O * Operations Manager Range \$100,000-\$200,000	Electrical Engineer O Mechanical Engineer O Environmental Engineer O Quality Controller O * Range \$100,000-\$200,000	Electronics Engineering Tech O Computer Network Specialist * Manuf. Busine. Chemi. Comu. Rang Range \$100,000-\$200,000	Process Business Chemi Comu Rang
Click <a href="#">HERE</a> for Postsecondary Options			

## Introduction for the Regional Advanced Manufacturing Pathway Education Building Block Guide

The purpose of this guide is to share employer-vetted guidance on academic and technical skills needed for success in a specific regional career pathway (RCP).

Education building blocks are founded on [academic standards](#) developed by the Wisconsin Department of Public Instruction (DPI). With a robust process in place to develop and revise learning standards, employer and industry partners from State and Regional Career Pathway Teams provide input during regular, formal updates to academic standards related to their industry.

Some education building blocks are related to a specific RCP. Other education building blocks apply across all RCPs. As educators create and implement career pathway programs based on RCPs, the goal is to integrate the education building blocks across all the components of the high school career pathway.

### Education Building Blocks:

- Block One: [Employability Skills Standards](#)
- Block Two: [Digital Literacy Skill Standards](#)
- Block Three: [Career and Technical Education \(CTE\) Standards](#)
- Block Four: Relevant Academic Competencies
- Block Five: Emerging Trends related to the RCP

### High School Career Pathway Components:

- [Sequence of CTE Courses](#)
- [Work-based Learning](#)
- [College Credit Opportunities](#)
- [Industry-recognized Credentials](#)
- [Career and Technical Student Organizations](#)



Wisconsin Guide to Implementing Career-Based Learning Experiences

Manufacturing Pathway Template [click here](#)  
Building Blocks Guide [click here](#)

# Pathways

## Career:

- Develop and implement through pathway sectors within the school
- Coordinate CTE Work-Based Learning Opportunities
- Align Higher Ed Opportunities within the School's Educational Process
- Partner Community Businesses and Agencies with Schools

HUHS Pathways Career Options - Overview

CTE Area	Super Sector	Pathway Sector	WBL Dual Enrollment	Positions	Partners
TEE Technical Engineering Education	Manufacturing	Welding	4 / Co-op w/ Business Partner - Junior Yr (1 credit)	Internship - Senior Yr (1 credit)	Signicat Helgeson Steelcraft MEC
		Machine Tool			Broan Signicat Maritz MEC
	Construction	General Construction		Transition to Full-time Career Employment Senior yr.	Keller
		Wood Production		Start College Now in related Pathway Sector - option for student (credit too)	Essel Ford DMD J&M Auto
	Transportation & Distribution	Auto Equipment Maintenance/Service/Technician		Min of 2 related Business & Industry Credentials (Cars)	Broan Laufer Trucking Walker Drive Logistics
		Logistics/Transportation/Warehouse		All WBL 3hr/5yr experiences are monitored by Pathway Sector Mentor	
	STEM	Power Energy Engineering			Quad
		Mechanical Engineer			
	Graphic Design	Printing & Graphics Technology			
EBT Business Information Technology	Business Administration	Accounting		Same	MEC Broan
		Marketing			MEC Broan
	Finance	Computer Information Support/Services			MEC Broan
		Digital Technology			MEC Broan
	Health Science	Med Healthcare	EMT		Same
FCS	Hospitality & Tourism	CNA			
		Biomedical Science			
		Culinary			

HUHS Pathways Career Pathway - Courses and Credit Options

CTE Area	Super Sector	Pathway Sector	Sequence of Courses	Credits	Related WBL
TEE Technical Engineering Education	Manufacturing	Welding	Welding 1	5	<ul style="list-style-type: none"> <li>Class tour w/ Bus Partner</li> <li>Group Job Shadows w/ Business Partner</li> <li>Transcripted Credit MPTC</li> </ul>
			Welding 2	5	<ul style="list-style-type: none"> <li>Individual Job Shadow w/ Business Partner</li> <li>Extended Job Shadow</li> <li>Transcripted Credit MPTC</li> </ul>
		Fab Methods		1	<ul style="list-style-type: none"> <li>Related VA or Co-op w/ Business Partner</li> <li>Internship w/ Business Partner</li> <li>Transcripted Credit MPTC</li> <li>B&amp;I Credentials</li> <li>WBL determined by Mentor and Pathway Team</li> </ul>
			Automated Manufacturing	1	<ul style="list-style-type: none"> <li>Related VA or Co-op w/ Business Partner</li> <li>Internship w/ Business Partner</li> <li>Transcripted Credit MPTC</li> <li>B&amp;I Credentials</li> <li>WBL determined by Mentor and Pathway Team</li> </ul>
		CNC Manufacturing		1	<ul style="list-style-type: none"> <li>Related VA or Co-op w/ Business Partner</li> <li>Internship w/ Business Partner</li> <li>Transcripted Credit MPTC</li> <li>B&amp;I Credentials</li> <li>WBL determined by Mentor and Pathway Team</li> </ul>
				1	<ul style="list-style-type: none"> <li>Related VA or Co-op w/ Business Partner</li> <li>Internship w/ Business Partner</li> <li>Transcripted Credit MPTC</li> <li>B&amp;I Credentials</li> <li>WBL determined by Mentor and Pathway Team</li> </ul>
<b>Total Credit for Manufacturing sector: 4 / Possible WBL Credits: .5 per semester for classes associated w/ VA-Co-op and/or Internship</b>					
	Machine Tool	Machine Tool	Machine Tool 1	.5	<ul style="list-style-type: none"> <li>Class tour w/ Bus Partner</li> <li>Group Job Shadows w/ Business Partner</li> <li>Transcripted Credit MPTC</li> </ul>
			Machine Tool 2	5	<ul style="list-style-type: none"> <li>Individual Job Shadow w/ Business Partner</li> <li>Extended Job Shadow</li> <li>Transcripted Credit MPTC</li> </ul>
		Fab Methods	1	<ul style="list-style-type: none"> <li>Related VA or Co-op w/ Business Partner</li> <li>Internship w/ Business Partner</li> <li>Transcripted Credit MPTC</li> </ul>	



# Pathways

Alt Ed

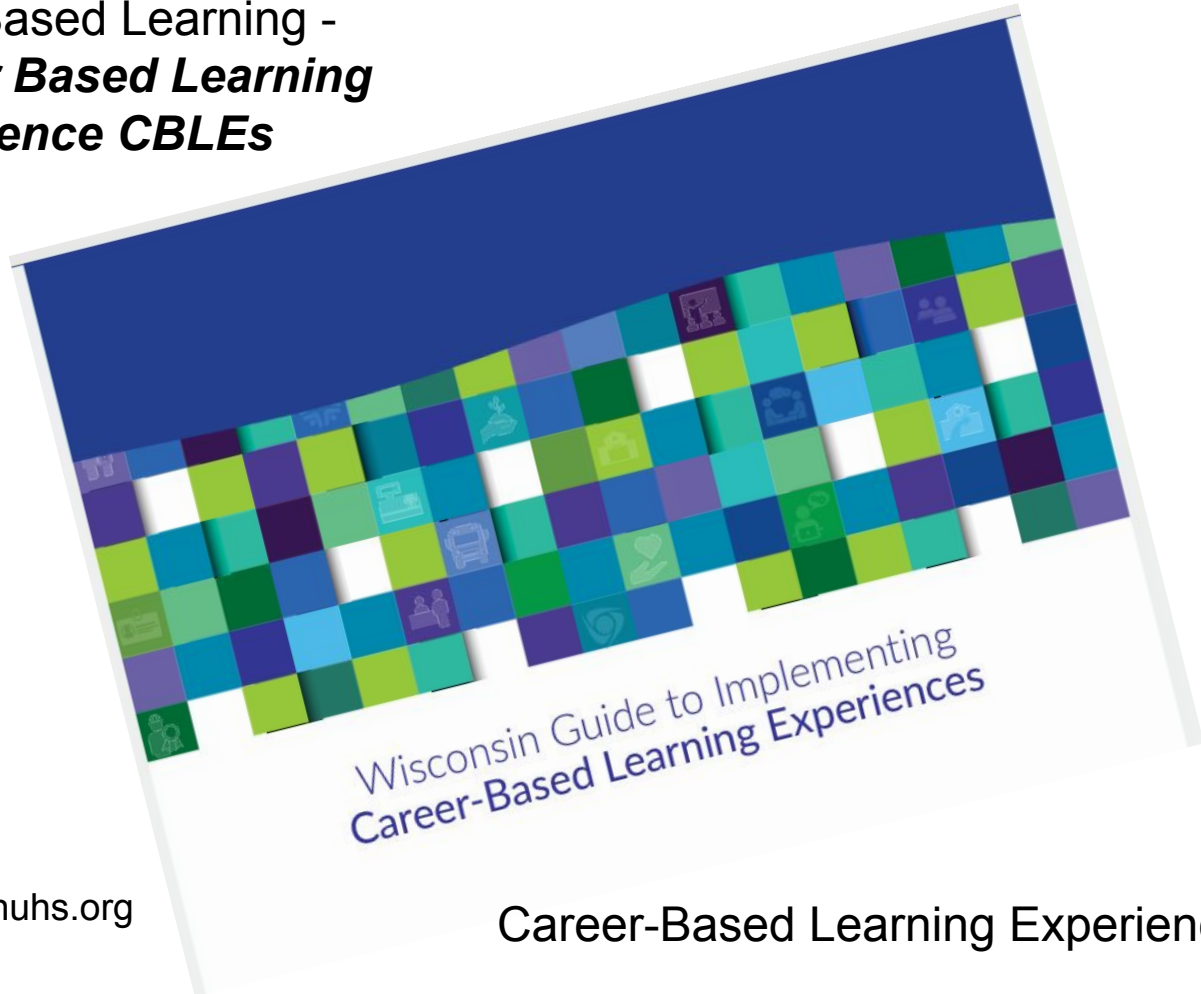
## Career:

- Develop and implement through pathway sectors within the school
- Coordinate CTE Work-Based Learning Opportunities
- Align Higher Ed Opportunities within the School's Educational Process
- Partner Community Businesses and Agencies with Schools

*HUHS Pathways Career Options & Business Partners*

Career Clusters	Pathway Sector	Position Examples	Related Courses	Work-Based Learning	Partners
Ag, Food and Natural resources	Ag Business	<ul style="list-style-type: none"> <li>• Farm &amp; Ranch Worker</li> <li>• Farm &amp; Ranch Management</li> </ul>	<ul style="list-style-type: none"> <li>• Exploring Life Science &amp; Ag</li> <li>• Animal Science</li> <li>• Dairy Science</li> </ul>	Business Tours Job Shadows Co-op / YA	Christian Farms Hartford Gehring Meat Market
	Animal Systems	<ul style="list-style-type: none"> <li>• Animal Caretakers</li> <li>• Feed Sales</li> <li>• Livestock Production</li> </ul>	<ul style="list-style-type: none"> <li>• Exploring Life Science &amp; Ag</li> <li>• Animal Science</li> <li>• Dairy Science</li> <li>• Veterinary Medicine</li> <li>• Horse Science &amp; Companion Animal</li> </ul>	Transcribed Credit	Kettle Hills Vet Hartford Animal Clinic Grande Cheese
	Food Grocery	<ul style="list-style-type: none"> <li>• Butcher &amp; Meat Cutters</li> <li>• Meat Processing</li> <li>• Slaughter &amp; Meat Packaging</li> <li>• Food Handler</li> </ul>	<ul style="list-style-type: none"> <li>• Dairy Science</li> </ul>	Career Specific Tours	
	Natural resources - Outdoors	<ul style="list-style-type: none"> <li>• Wildlife Support Management</li> <li>• Natural Resource Laborer</li> </ul>		Classroom Presentations	Grande Cheese Gehring Meat Market
	Plant / Landscape	<ul style="list-style-type: none"> <li>• Nursery &amp; Greenhouse</li> <li>• Tree Trimmers</li> <li>• Forestry, Landscape &amp; Nursery</li> <li>• Commercial Horticulture and Sports Turf</li> </ul>	<ul style="list-style-type: none"> <li>• Wildlife &amp; Forestry Management</li> <li>• Outdoor Conservation &amp; Management</li> </ul>	Virtual Tours	Hartford Conservative Club
Construction	Construction - General Laborer	<ul style="list-style-type: none"> <li>• Carpentry</li> <li>• Iron Working</li> <li>• Masonry</li> <li>• Electrical &amp; Power</li> <li>• Construction Management</li> </ul>	<ul style="list-style-type: none"> <li>• Horticulture &amp; Greenhouse Management</li> <li>• Plant &amp; Soil Science</li> </ul>		Hartford Conservative Club
	Construction - Operator	<ul style="list-style-type: none"> <li>• Woods I, II, III</li> <li>• Cabinet Making</li> <li>• Residential Construction - Interior, Exterior</li> <li>• VISION</li> <li>• Introduction to Engineering Design</li> <li>• Machine Tool I &amp; II</li> <li>• Welding I &amp; II</li> <li>• Fab Methods</li> <li>• CNC Manufacturing</li> </ul>	Same	Keller Construction Braon Signicast Helgesen CDM Mantz MEC SteelCraft	
	Maintenance & Operations	<ul style="list-style-type: none"> <li>• Grounds Keeping</li> <li>• Small &amp; Large Machine Operator</li> </ul>	n/a		
	Power, Structure &	<ul style="list-style-type: none"> <li>• Facilities Maintenance</li> <li>• Grounds Keeping</li> <li>• Electrician</li> </ul>	n/a	Same	
			<ul style="list-style-type: none"> <li>• Physics of Electrical</li> </ul>	Same	
				Quad	

Work Based Learning -  
***Career Based Learning  
Experience CBLEs***



scott.carr@huhs.org

Career-Based Learning Experiences [click here](#)

# Pathways

## Community:

- Alignment and Partnerships with Local businesses
- Partnerships and Experiences with Local Agencies
- Involvement and Opportunities with Service Learning

**Academic and Career Planning (ACP) Process**

**Jumpstart to SUCCESS**

Preparing our students for post-secondary education along with preparation for the workplace, is a high priority for HUHS. Through our Jumpstart to Success (CCCR) and the Academic and Career Planning (ACP) process, students will follow a path that will support gaining an understanding of self awareness, participate in career exploration, plan, and move towards building the skills needed to be successful. This process is part of Oniole Time and embedded into many of our courses offered to all students.

**ACP 4 Step Process**

- 1 Self Awareness
- 2 Career Exploration
- 3 Career Planning
- 4 Skills Based AC-Plan

**Related DPI Areas**

- 1 KNOW
- 2 EXPLORE
- 3 PLAN
- 4 GO

**HUHS Community Connections**

In a partnership with our local and regional businesses, service agencies, and community organizations, students are able to meet graduation requirements along with meeting (2) **career exploration**, and (3) **building workforce related skills** as a part of our **Community Connections**. Many of these activities and experiences are embedded into our CTE courses offered to all students.



**Community Connections**

**Jumpstart to SUCCESS**

Preparing our students for post-secondary education along with preparation for the workplace, is a high priority for HUHS. Through our Jumpstart to Success (CCCR) and the Community Connections experience, students have an opportunity to partner with local and regional businesses, service agencies, community organizations, and higher education colleges and universities. Our Career and College Learning experiences include:

<b>Career, College &amp; Community Awareness</b>	<b>Career &amp; College Fairs</b>	Career & College Fairs - an opportunity to meet a variety of prospective business and colleges along with exploring numerous career pathways aligned to the 16 career clusters.
	<b>Tours</b>	Business Tours - Learners visit a workplace, learn about the business, meet employees, and observe work in progress.
	<b>Service Opportunities</b>	Service Opportunities - Learner volunteers with a service agency and engages in work or service activities. Often activities are related to a class or classroom activities deepening their understanding of what is being taught.
	<b>Post Secondary Tours</b>	Post Secondary Tours - Student participates in a college and/or campus tour of a college, tech school, or university.
<b>Career, College &amp; Exploration</b>	<b>Job Shadow</b>	Job Shadow - Learner is paired with employer and observes the workday, interacts with employees, and attends work related activities.
	<b>Mentorship</b>	Mentorship - Learners are matched one-to-one or in small groups with industry professional to explore potential careers.
	<b>Individualized Tour</b>	Individualized Tour - Learner visits a specific workplace within the learner's career pathway. Tour may be specific to the learners interests and a more defined career program of study.
<b>Career, College &amp; Planning &amp; Preparation</b>	<b>Co-op</b>	Co-op - A planned workbased experience within a specific career pathway for a designated period of time to build career and technical skills while allowing the learner to assess career interest.
	<b>Entrepreneurship - Student Led</b>	Entrepreneurship / Student Led - Learners operate school-based enterprise that produce goods or service for sale.
	<b>Business &amp; Industry Certs</b>	Business & Industry Certifications - Learners participate in postsecondary credential learning experiences in specific areas related to course. Learners show proficiency through tests, skills experience, or other certificate activities.
	<b>Apprenticeship</b>	Apprenticeship - A career training experience lasting 1-2 semesters or more and is connected to a career pathway and related courses. Provides a combination of on-the-job training and formal classroom instruction.
<b>Career, College &amp; Skills Training</b>	<b>Internship</b>	Internship - A structured and time-limited career training experience in which the learner is placed at a worksite within a highly specific career program of study.
	<b>Dual Credit &amp; College Prep</b>	Dual Credit - Learners participate in courses that allow for college credit and/or college preparation. Examples: CAPP, Start College Now, Early College Credit Program, PLTW, CLEP, Advance Placement (AP) courses.

# Pathways

## Higher Ed:

- Develop Higher Ed Pathway Options - SCN, ECCP, 3+1
- Connect and Partner with School, Business, and Higher Ed
- Coordinate Dual Enrollment to fit Pathway Sectors

Kreilkamp Trucking

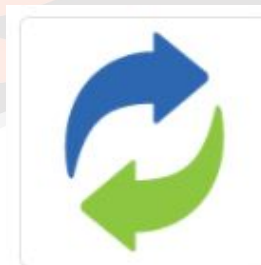


MPTC College Course



Continuing Ed within Pathways - part of conversations

TC (Transcribed Credit)



Early College Credit Program  
Start College Now



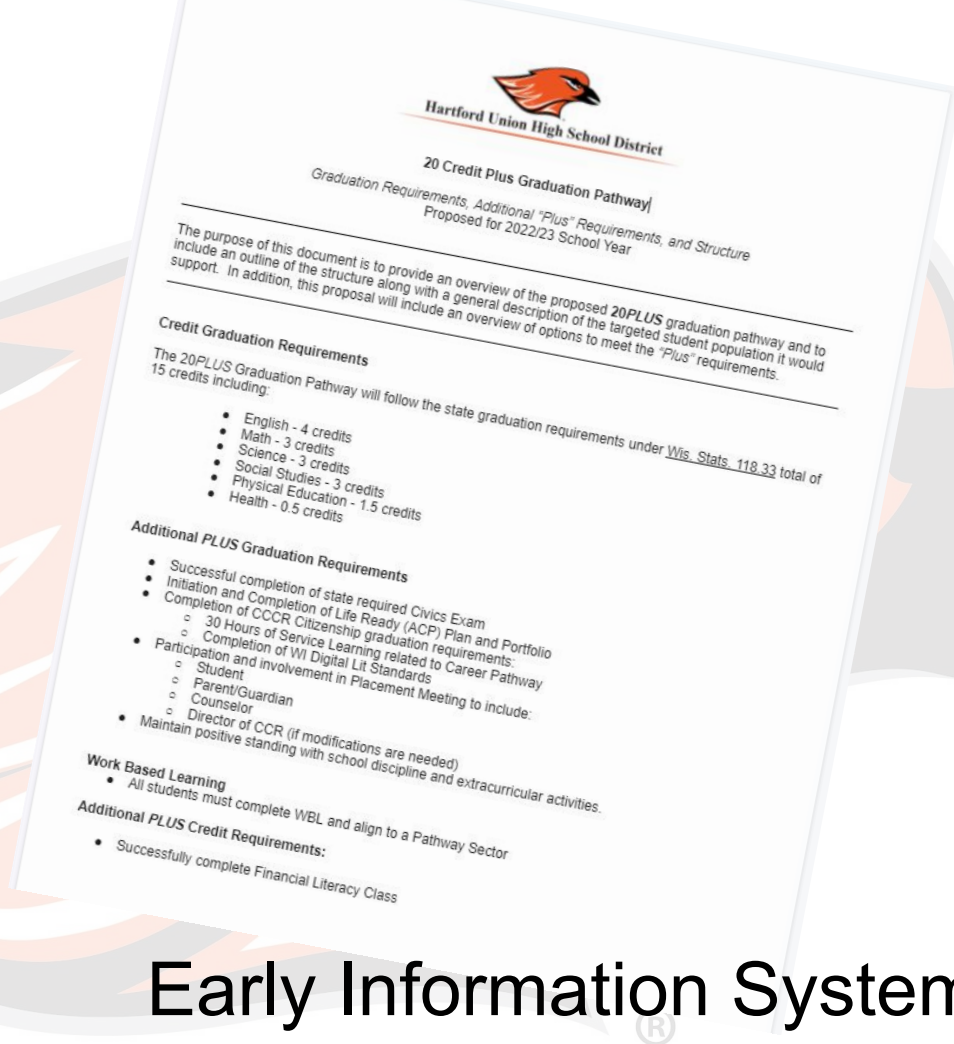
***We have it as an expectation!***

# Pathways

## Graduation:

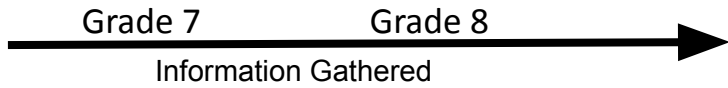
- Regular Credit Pathway
- **Reduced Credit Pathway**
- GED Option 2 Pathway
  - MPTC
  - HUHS
- Competency Based 5.09 Pathway
  - MPTC
  - HUHS
- Alternative Options with Career Pathway Opportunities

scott.carr@huhs.org



# Early Information System





**Indicators**

Attendance  
Discipline  
Mobility  
Assessments

Xello - Inventories  
Matchmaker  
Personality Styles  
Learning Styles  
Skills Lab

**Process**

Review of EIS / EWS / DEWS - team approach grades 7-9  
Interview and ACP Process - w student and parent  
Map out 20PLUS structure - w review points and adjustments  
Placement - parent meeting w contract

Domain	High Risk	Moderate Risk	Low Risk
<b>Attendance</b>	18+ days absent in prior year	10 to 18 days absent in prior year	Less than 10 days absent in prior year
<b>Discipline</b>	2.5+ days suspended/expelled in prior year	1 to 2.5 days suspended/expelled in prior year	Less than 1 day suspended/expelled in prior year
<b>Mobility</b>	2+ moves in prior year (school or district)	1 move in prior year (school or district)	0 moves in prior year
<b>Assessments</b>	Lower than the 20 <sup>th</sup> percentile in reading and math	20 <sup>th</sup> to 50 <sup>th</sup> percentile in reading and math	50 <sup>th</sup> percentile or better in reading and math

# Pathways

## Graduation:

- Regular Credit Pathway
- **Reduced Credit Pathway**
- GED Option 2 Pathway
  - MPTC
  - HUHS
- Competency Based 5.09 Pathway
  - MPTC
  - HUHS
- Alternative Options with Career Pathway Opportunities

Student Example: 20Plus Program - 2022/23 School year Roll out

Grade	9				10				11				12			
Block	Term/Class															
1	Eng 1		Eng 2		Eng 3		Eng 4		Fin Lit		CNC Man		YA/Intern		Employed	
2	Bio		Science		Science		Health	PE	Fab Methods		Careers MPTC					
3	Wild Cult		Civics	SS	Wild 1	SS	Wild 2	SS	Automated Man		YA					
4	PE	PE	Math		Math		Math		YA		YA					
	4/4 TL credits		4/8 TL credits		4/12 TL credits		4/16 TL credits		4/20 TL credits		3/23 TL credits		2/25 TL credits			
	4/4 Core 0 Plus		4/8 Core 0 Plus		3.5/11.5 Core .5 Plus		3.5/15 Core .5 Plus		0 Core 4 Plus		0 Core 3 Plus		0 Core 3 Plus			
Work-Based Learn	<ul style="list-style-type: none"> <li>● Student referred to 20PLUS</li> <li>● Student goes through placement mtg</li> <li>● Student approved - CTE mentor assigned</li> <li>● Student attends 20 PLUS program introduction mtg end of year</li> <li>● Student participates in CTE tour rotation</li> <li>● Student completes Life Ready plan</li> </ul>				<ul style="list-style-type: none"> <li>● Student participates in specific CTE pathway tour(s)</li> <li>● Student participates in CTE job shadows</li> <li>● Student participates in tech college CTE tour</li> <li>● Student / mentor plans out YA</li> </ul>				<ul style="list-style-type: none"> <li>● Student participates in YA</li> <li>● Student increases sem 2 YA - to half day</li> <li>● Careers MPTC - Start College Now</li> <li>● Student / Mentor plans out intern and full time employment sr yr</li> </ul>				<ul style="list-style-type: none"> <li>● Student participates in YA sem 1 full day</li> <li>● Student meets w Mentor - recommendation to full time employment in CTE pathway</li> </ul>			

CTE Area: TEE

Super Sector: Manufacturing

Pathway Sector: Welding

Sequence of classes: All

Credits in Pathway: 4

Additional: Financial Literacy, Careers MPTC Start College Now

Total Credits for Graduation: 25

scott.carr@huhs.org

# Early Information System

# Pathways

## Graduation:

- Regular Credit Pathway
- Reduced Credit Pathway
- **GED Option 2 Pathway**
  - **MPTC**
  - **HUHS**
- Competency Based 5.09 Pathway
  - MPTC
  - HUHS
- Alternative Options with Career Pathway Opportunities

## Structure & Highlights

- Offered in each of our 4 blocks at HUHS
- Offered 3 days per week at MPTC
- Each student commits to a career pathway - staff supported
- Each student completes a MPTC Transcribed Credit

[scott.carr@huhs.org](mailto:scott.carr@huhs.org)



# Pathways

## *Structure & Highlights*

### Graduation:

- Regular Credit Pathway
  - Reduced Credit Pathway
  - GED Option 2 Pathway
    - MPTC
    - HUHS
  - **Competency Based 5.09 Pathway**
    - **MPTC**
    - **HUHS**
  - Alternative Options with Career Pathway Opportunities
- Partnership between HUHS and MPTC - WTCS
  - Students are supported at MPTC 2 days per week - 3.5 hours
  - WTCS Statewide Curriculum competencies are used
  - Partnership is contracted through a 118.15 contract
  - Students are transported to MPTC
  - Each student commits to a career pathway - staff supported
  - Each student completes a MPTC Transcribed Credit
  - MPTC offers career supported activities through program participation

scott.carr@huhs.org



## Structure & Highlights

# Pathways

## Graduation:

- Regular Credit Pathway
- Reduced Credit Pathway
- GED Option 2 Pathway
  - MPTC
  - HUHS
- Competency Based 5.09 Pathway
  - MPTC
  - HUHS
- **Alternative Options with Career Pathway Opportunities**

- GPS - Hartford

- CESA1 - Alt Ed

### New Pathways

Alternative Program for At-Risk Students in Grades 9–12

New Pathways is an alternative education program for underserved students in grades 9-12. Student options include both credit attainment and GED Option 2. This individualized, self-paced program is specifically targeted toward students who are at-risk of not graduating high school and are in need of either credit attainment to get back on track or the GED Option 2 for graduation.

- Credit Recovery @ HUHS - Through Advisory / 3 days per week.



## GPS Education Partners

GPSEd's partnership with HUHS provides work-based learning opportunities to students who want to jumpstart a technical career and graduate high school career ready.

### GPS Benefits:

- Enjoy the perks of smaller class sizes in a work-based setting.
- Receive industry certifications and your HS diploma.
- Earn while you learn; many students enjoy PAID pathways.
- Instead of grades, you earn credits for learning.

**78%**  
Percentage of graduates working in technical careers.

**100**  
Number of businesses in Wisconsin GPSEd partners with to help students earn certification.

**53%**  
Percentage of graduates in the GPSEd program are offered jobs with the business partners.

"The GPSEd program allowed me to take a different approach to learning and gain more work experience."  
- Alex Czarnota '19  
Steel Craft Corp.

"Imagine walking into a machine shop pretending to know all about the tools and parts, but knowing nothing. Now imagine walking out 1-2 years later knowing all of the tools and machines like the back of your hand."  
- Chase Nanez, '19 Menasha Packaging Co.



Lapham Peak Boardwalk construction 2019.



Chase Nanez '19, Ice Age Trail Boardwalk construction.



# Resources

CCR Graduation Requirements - [click here](#)

Pathways Worksheet - [click here](#)

Graduate Profile - [click here](#)

Lifer Ready Plan - [click here](#)

Personal Needs and Interest Profile (PNIP) - [click here](#)

CTE Pathway Sectors - [click here](#)

CTE Pathway Secor Example - Welding - [click here](#)

Alt Ed Pathways Chart - [click here](#)

ACT Process - [click here](#)

Community Connections Work Based Learning - [click here](#)

20PLUS Graduation Pathways - [click here](#)

Student Example 20PLUS - [click here](#)

*Engage*

*Support*

*Discover*

*Achieve*

*Contribute*



Hartford Union High School District